



Albany Pine Bush Preserve Hunting, Fishing & Trapping March 1, 2024 thru August 31, 2024

PLEASE NOTE — A Longbow means any bow that is legal for use pursuant to the ECL and includes a long (stick), compound or recurve bow. Crossbows are legal in the APB Preserve and WMU 4J for small game, migratory waterfowl and migratory game birds only. Rifles of any kind are not allowed in the preserve.

TRAILHEAD 1A AREA: East of State Rt 155, west of Yellow Trail, north of NYS Thruway, south of RR tracks

Hunting: open to archery-only small game hunting...**EXCEPT...** **CLOSED May 1 – June 17 from 8AM to 3PM, MON - FRI.**

Trapping: closed this period.

TRAILHEAD 1B AREA: East of Yellow Trail, west of Rapp Rd, north of landfill, south of RR tracks

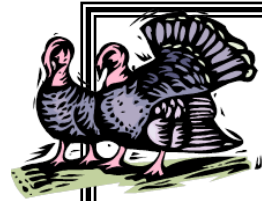
Hunting: restricted to archery-only small game hunting.

Trapping: closed this period.

TRAILHEAD 2 AREA: East of Lincoln/Rapp Rd, west of I-87 and north of NYS Thruway

Hunting: restricted to archery-only small game hunting.

Trapping: closed this period.



**SPRING TURKEY
2024 SEASON DATES**

Albany Pine Bush Preserve within
Wildlife Management Unit 4J
Youth Season—April 20-21
Regular Season—May 1-31

TRAILHEAD 3 AREA: East of I87, north of I90, south of RR tracks

Hunting: closed to hunting this period.

Trapping: closed this period.

Fishing: Entire Preserve open to fishing consistent with DEC regulations.

Best fishing opportunities in areas 1A&B,2,3. Please use non-toxic sinkers and lures.

TRAILHEADS 4, 5 & 6 AREAS: East of State Rt 155 and south of Washington Ave Ext

Hunting: restricted to archery-only small game hunting.

Trapping: closed this period.

TRAILHEADS 7, 8,10,11 AREAS: West of State Rt 155, south of NYS Thruway

Hunting: Please use non-toxic shot.

Small game: open consistent with DEC regulations & Pine Bush regulations.

Trapping: closed this period.

TRAILHEAD 9 & 12 AREA: West of State Rt 155 and north of NYS Thruway

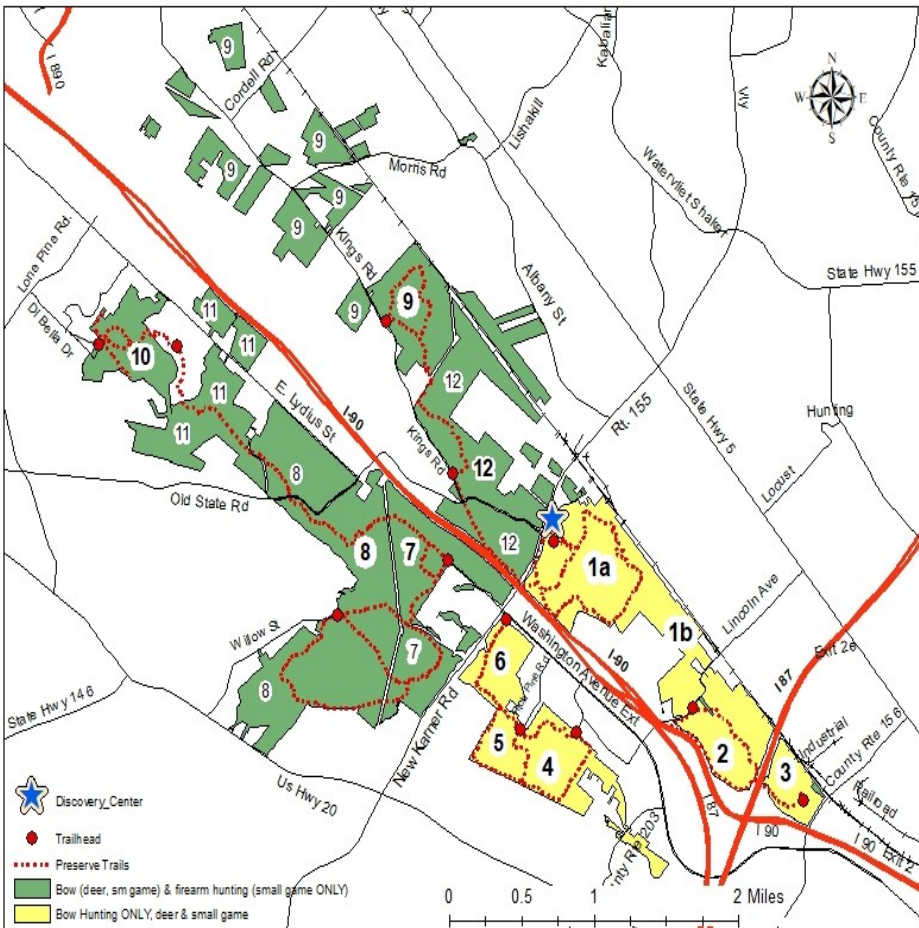
Hunting: Please use non-toxic shot.

Small game: Open consistent with DEC regulations & Pine Bush regulations.

Trapping: closed this period.

THIS IS A SUMMARY ONLY. For a complete text of regulations pertaining to the Albany Pine Bush, contact the Albany Pine Bush Preserve Commission (518-456-0655) or DEC Region 4 (518-357-2067) or visit www.albanypinebush.org

Season dates for other species may be found at:
www.dec.ny.gov/outdoor/28634.html



Note: separate guidelines will be issued by August 1, 2024 for hunting opportunities during the period September 1, 2024 to February 28, 2025.

Albany Pine Bush Preserve

Fishing, Hunting & Trapping

March 1, 2024 thru August 31, 2024

	Trailhead area 1A & 1B	Trailhead area 2	Trailhead area 3	Trailhead areas 4,5,6	Trailhead areas 7, 8, 10 & 11	Trailhead area 9 & 12
Location	East of State Rt 155, west of Rapp Rd, west of I87, north of NYS Thruway, south of RR tracks	East of Rapp Rd, west of I87 and north of NYS Thruway	East of I87 and north of I90, south of RR tracks	East of State Rt. 155 and south of Washington Ave Extension	West of State Rt. 155 and south of NYS Thruway	West of State Rt 155 and north of NYS Thruway
Hunting	<u>Small game:</u> archery only* (see comments)	<u>Small game:</u> archery only	CLOSED	<u>Small game:</u> archery only	<u>Small game:</u> open consistent with NYSDEC regulations & Pine Bush regulations.	<u>Small game:</u> open consistent with NYSDEC regulations & Pine Bush regulations.
Trapping	CLOSED	CLOSED	CLOSED	CLOSED	CLOSED	CLOSED
Fishing	Open	Open	Open	None	Open, few opportunities exist	Open
Comments	*Closed to hunting from 8 AM to 3 PM, Mon – Fri, from May 1 – June 19				Limited fishing opportunities	Limited fishing opportunities

PLEASE USE NON-TOXIC SHOT AND SINKERS